

FTD MARKETPLACE 2021

ONE STOP SHOP

VOLUME 6
SYMPATHY





A. GLASS GATHERING VASE
4¾" dia. opening × 8"H.
\$45.32 ctn. of 9 (\$5.04 ea.)
LTL \$30.57 ctn. of 9 (\$3.40 ea.)
HM 4110-09-09 S5256, S5262,
S5270, S5285, S5289, S5294,
S5314, S5319, S5324, S5325,
S5336, S9-4979 and S40-4529



B. GLASS GATHERING VASE
4" dia. opening × 8"H.
\$44.49 ctn. of 12 (\$3.71 ea.)
LTL \$29.49 ctn. of 12 (\$2.46 ea.)
HM 4104-12-09 S46-4550



C. GLASS GATHERING VASE
3¾" dia. opening × 6½"H.
\$42.51 ctn. of 12 (\$3.54 ea.)
LTL \$31.31 ctn. of 12 (\$2.61 ea.)
HM 4102-12-09 S40-4529



D. GLASS GATHERING VASE
6" dia. opening × 8"H.
\$46.78 ctn. of 6 (\$7.80 ea.)
LTL \$34.43 ctn. of 6 (\$5.74 ea.)
HM 4111-06-09 S20-4482



E. GLASS ROSE VASE
4½" dia. opening × 8"H.
\$36.99 ctn. of 12 (\$3.08 ea.)
LTL \$23.88 ctn. of 12 (\$1.99 ea.)
HM 4099-12-09 S5303



F. COBALT GLASS GATHERING VASE
4¾" dia. opening × 8"H.
\$35.17 ctn. of 6 (\$5.86 ea.)
LTL \$23.83 ctn. of 6 (\$3.97 ea.)
HM COB940 S5307 and S5345



G. HANDBLOWN GLASS CYLINDER
6" dia. opening × 6"H.
\$35.34 ctn. of 6 (\$5.89 ea.)
HM FTG66 S5290 and S6-4986





A. ABBY PLASTIC COMPOTE VASE
8½" dia. opening × 5¾"H.
\$31.03 ctn. of 6 (\$5.17 ea.)
LTL \$25.54 ctn. of 6 (\$4.26 ea.)
HM 138-06-22 S5261, S5273 and S5317



B. PLASTIC DESIGNER URN
8" dia. opening × 9½"H.
\$43.03 ctn. of 6 (\$7.17 ea.)
LTL \$37.00 ctn. of 6 (\$6.17 ea.)
HM 81-06-22 S2-4438, S15-4470,
S28-5010 and S45-4544



C. VERSATILE PLASTIC CONTAINER
9" dia. opening × 9"H.
\$27.51 ctn. of 12 (\$2.29 ea.)
LTL \$22.57 ctn. of 12 (\$1.88 ea.)
HM 170-12-22 S5253, S5266, S5276,
S5281, S5291, S5301, S5313 and S5332



D. PLASTIC PEDESTAL URN
8½" dia. opening × 11¼"H.
\$73.03 ctn. of 12 (\$6.09 ea.)
LTL \$64.84 ctn. of 12 (\$5.40 ea.)
HM 84-12-22 S5268, S5282, S5300,
S5328, S5331, S5344 and S5349





A. WOODCHIP BASKETS

Hard liners included. Moveable handle.
8½", 10" and 11½" oval.
\$67.99 ctn. of 12 (\$5.67 ea.)
HM 2097 S5255, S5258, S5260, S5272,
S5284, S5286, S5293, S5318, S5321,
S5334, S5335, S5337, S5338, S5339,
S5340, S5343, S5346 and S5350



B. WOODCHIP BASKETS WITH GREEN RIMS

Hard liners included.
12" and 14" rectangular.
\$59.88 ctn. of 8 (\$7.49 ea.)
HM F6717GW S36-4524



C. WOODCHIP BASKET

Hard liners included.
Moveable handle.
6½" dia. opening x 4"H.
\$40.99 ctn. of 12 (\$3.42 ea.)
HM BWC6 S9-4980



D. WOODCHIP BASKET

Hard liners included.
Moveable handle.
8½" dia. opening x 4½"H.
\$39.88 ctn. of 8 (\$4.99 ea.)
HM BWC8 S9-4980



E. WOODCHIP BASKETS

PVC liners include.
Moveable handle.
8", 10" and 12" rectangle.
\$19.22 ctn. of 3 (\$6.41 ea.)
HM 9710432 S25-4493



F. 4" WATER TUBE

Polystyrene tube with cap.
\$45.53 ctn. of 500 (\$0.09 ea.)
HM 1931SO S25-4493



G. WHITEWASH WOODCHIP POTCOVER

Over-the-rim hard liners included.
Fits a 6" grower's pot.
6¾" dia. opening x 6"H.
\$49.88 ctn. of 12 (\$4.16 ea.)
HM 72346WW S5259 and S5287



H. WHITEWASH BAMBOO BASKETS

Over the-rim hard liners included.
7" oval, 7" square, 6½" round.
\$40.88 ctn. of 24 (\$1.70 ea.)
HM 1603GW S7-4450
and S29-4503



I. WHITEWASH WOODCHIP BASKETS

Hard liners included. Moveable handle.
7", 8½" and 10" average sizes.
\$62.88 ctn. of 12 (\$5.24 ea.)
HM 85616WW S5305, S29-5008
and S43-5027



A. 15" WREATH BASE
15" dia. x 3"W x 2 3/4"H;
9" inside diameter.
\$75.78 ctn. of 6 (\$12.63 ea.)
HM 11-01030 S29-4502



B. 18" WREATH
\$80.12 ctn. of 4 (\$20.03 ea.)
HM 1840SO S5252, S5265, S5280,
S5292, S5309, S5311, S5333, S5347,
S5348 and S44-4542



C. 18" OPEN HEART
\$72.09 ctn. of 4 (\$18.02 ea.)
HM 1825SO S46-4547



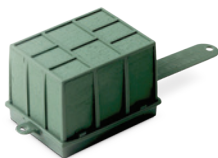
D. 18" SOLID HEART
\$74.55 ctn. of 4 (\$18.64 ea.)
HM 1815SO S5267, S5274, S5320
and S45-4543



E. 20" CROSS
\$47.45 ctn. of 4 (\$11.86 ea.)
HM 1830SO S44-5024
and S47-4556



F. 24" CROSS
\$61.60 ctn. of 4 (\$15.40 ea.)
HM 1835SO S5283, S5-4446
and S12-4464



G. FLORACAGE® HOLDER
4 1/4"W x 3"D x 3 1/4"H.
\$30.57 ctn. of 12 (\$2.55 ea.)
HM 11-01000 S5311



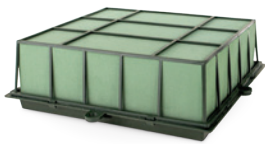
H. FLORACAGE® HOLDER
6 3/4"W x 4 1/4"D x 3 1/4"H.
\$53.72 ctn. of 12 (\$4.48 ea.)
HM 11-01010 S6-4447
and S31-5006



I. OASIS® JUMBO CAGE
13 1/8"W x 6 1/16"D x 3 3/8"H.
\$25.36 ctn. of 4 (\$6.34 ea.)
HM 11-01015 S5254, S5269, S5296,
S5302, S5304, S5308, S5322,
S5329 and S13-4997



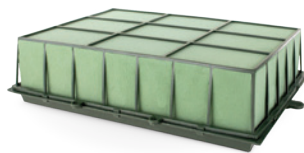
J. 48" METAL EASEL
Made in the USA.
\$41.37 ctn. of 10 (\$4.14 ea.)
LTL \$37.59 ctn. of 10 (\$3.76 ea.)
HM 565-10-07 S5254, S5267, S5269,
S5274, S5283, S5292, S5296, S5302,
S5304, S5308, S5309, S5311, S5320,
S5322, S5333, S5347, S5348, S6-4447,
S12-4464, S29-4502, S44-4542,
S44-5024, S45-4543, S46-4547
and S47-4556



A. SERENITY CAGE WITH TWO AQUAFOAM® BRICKS
10 $\frac{7}{8}$ "W × 10 $\frac{1}{4}$ "D × 3 $\frac{1}{4}$ "H.
\$33.35 ctn. of 6 (\$5.56 ea.)
LTL \$30.57 ctn. of 6 (\$5.10 ea.)
HM 665-06-07 S5298



B. ROUND SERENITY RISER
6 $\frac{5}{8}$ " dia. × 2"H; 5 $\frac{5}{8}$ " dia. opening.
\$23.25 ctn. of 24 (\$0.97 ea.)
LTL \$20.48 ctn. of 24 (\$0.85 ea.)
HM 661-24-07 S5298



C. SERENITY CAGE WITH THREE AQUAFOAM® BRICKS
15 $\frac{1}{8}$ "W × 10 $\frac{1}{4}$ "D × 3 $\frac{1}{4}$ "H.
\$28.27 ctn. of 4 (\$7.07 ea.)
LTL \$25.49 ctn. of 4 (\$6.37 ea.)
HM 667-04-07 S5310, S5316 and S5323



D. RECTANGULAR SERENITY RISER
6 $\frac{1}{2}$ "W × 3 $\frac{3}{4}$ "D × 2"H; 6"W × 3"D bench.
\$23.25 ctn. of 24 (\$0.97 ea.)
LTL \$20.48 ctn. of 24 (\$0.85 ea.)
HM 662-24-07 S5310, S5316 and S5323



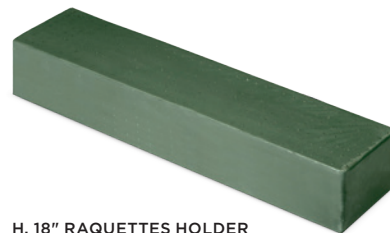
E. RING HOLDER
12" dia. × 1 $\frac{1}{2}$ "W × 1 $\frac{1}{4}$ "H;
8 $\frac{1}{2}$ " inside diameter.
\$70.05 ctn. of 10 (\$7.00 ea.)
HM 11-01043 S46-4548



F. DESIGN RING
13" dia. × 1 $\frac{1}{4}$ "W × 2 $\frac{1}{4}$ "H foam;
8 $\frac{1}{2}$ " inside tray diameter.
\$117.89 ctn. of 10 (\$11.79 ea.)
HM 11-11048 S5297



G. DESIGN RING
14 $\frac{1}{2}$ " dia. × 2 $\frac{1}{4}$ "W × 2 $\frac{1}{4}$ "H foam;
9" inside tray diameter.
\$78.75 ctn. of 6 (\$13.12 ea.)
HM 11-11049 S5257, S5263, S5271,
S5278, S5288, S5295, S5306, S5315,
S5327 and S5330



H. 18" RAQUETTES HOLDER
18"W × 4"D × 3"H.
\$68.99 ctn. of 10 (\$6.90 ea.)
HM 11-01110 S44-4541



I. SINGLE CASSET SADDLE
Holds one floral foam brick.
13 $\frac{1}{2}$ "W × 10 $\frac{1}{2}$ "D × 2 $\frac{1}{2}$ "H.
\$63.52 ctn. of 18 (\$3.53 ea.)
HM 625-18-07 S12-4465, S13-4994,
S46-4549 and S47-4555

J. DOUBLE CASSET SADDLE
Holds two floral foam bricks.
23"W × 10"D × 2 $\frac{1}{2}$ "H.
\$66.43 ctn. of 12 (\$5.54 ea.)
HM 626-12-07 S5251, S5264,
S5275, S5279, S12-4465, S16-4471
and S20-4481



K. DOUBLE CASSET SADDLE
Holds two standard bricks.
20 $\frac{3}{4}$ "W × 8"D × 4 $\frac{3}{4}$ "H.
\$41.12 ctn. of 6 (\$6.85 ea.)
LTL \$38.35 ctn. of 6 (\$6.39 ea.)
HM 620-06-04 S5312 and S5326





A. ANTIQUE BRASS PLASTIC DESIGNER URN
Fits a 5½" to 6" grower's pot.
6⅞" dia. opening × 7¾"H.
\$41.40 ctn. of 12 (\$3.45 ea.)
LTL \$35.47 ctn. of 12 (\$2.96 ea.)
HM 80-12-175



B. SANDSTONE PLASTIC DESIGNER URNS
Fits a 5½" to 6" grower's pot.
6⅞" dia. opening × 7¾"H.
\$41.38 ctn. of 12 (\$3.45 ea.)
LTL \$35.47 ctn. of 12 (\$2.96 ea.)
HM 80-12-47



C. METALLIC PLASTIC DESIGNER URNS
Fits a 5½" to 6" grower's pot.
6⅞" dia. opening × 7¾"H.
\$41.38 ctn. of 12 (\$3.45 ea.)
LTL \$35.47 ctn. of 12 (\$2.96 ea.)
HM 80-12-57



D. ANTIQUE BRASS PLASTIC DESIGNER URN
Fits a 7½" grower's pot.
8" dia. opening × 9½"H.
\$43.03 ctn. of 6 (\$7.17 ea.)
LTL \$36.99 ctn. of 6 (\$6.17 ea.)
HM 81-06-175



E. SANDSTONE PLASTIC DESIGNER URNS
Fits a 7½" grower's pot.
8" dia. opening × 9½"H.
\$43.03 ctn. of 6 (\$7.17 ea.)
LTL \$36.99 ctn. of 6 (\$6.17 ea.)
HM 81-06-47



F. METALLIC PLASTIC DESIGNER URNS
Fits a 7½" grower's pot.
8" dia. opening × 9½"H.
\$43.03 ctn. of 6 (\$7.17 ea.)
LTL \$36.99 ctn. of 6 (\$6.17 ea.)
HM 81-06-57



G. PORCELAIN ANGEL PLANTER
4½" dia. opening × 4¼"H; 7" angel.
\$26.88 ctn. of 2 (\$13.44 ea.)
HM 9736693



H. CERAMIC CROSS PLANTER
4½" dia. opening × 4"H. 7¼"OH.
\$71.84 ctn. of 12 (\$5.99 ea.)
HM T11337



I. CERAMIC CROSS PLANTER
6½" dia. opening × 5½"H. 9½"OH.
\$52.21 ctn. of 4 (\$13.05 ea.)
HM T11336



J. ANGEL CAT AND DOG FIGURINES
2½"W × 2"D × 2½"H.
\$43.88 ctn. of 8 (\$5.49 ea.)
HM 9727585



K. 12" RESIN ANGEL HOLDING FLOWERS
\$81.34 ctn. of 6 (\$13.56 ea.)
HM R7254



L. 16" RESIN ANGEL HOLDING FLOWER & BIRD
\$82.80 ctn. of 4 (\$20.70 ea.)
HM R7234



M. 19" RESIN PRAYING ANGEL
\$76.76 ctn. of 4 (\$19.19 ea.)
HM R1310



N. 16" GREEN DISTRESSED WOOD CROSS WITH METAL
\$61.28 ctn. of 4 (\$15.32 ea.)
HM W7136



O. 16" BROWN DISTRESSED WOOD CROSS WITH METAL
\$61.28 ctn. of 4 (\$15.32 ea.)
HM W7137



A. 38" STAINED GLASS WIND CHIME
The Lord's Prayer.
 \$193.20 ctn. of 6 (\$32.20 ea.)
 HM WC1358



B. 38" STAINED GLASS WIND CHIME
If Tears Could Build a Stairway.
 \$193.20 ctn. of 6 (\$32.20 ea.)
 HM WC1359



C. 38" STAINED GLASS WIND CHIME
Amazing Grace.
 \$35.32 ea.
 HM FWC1356



D. 38" STAINED GLASS WIND CHIME
Amazing Grace.
 \$193.20 ctn. of 6 (\$32.20 ea.)
 HM WC2438



E. 48" METAL WIND CHIME HOOK
 \$65.93 ctn. of 6 (\$10.99 ea.)
 HM FM0562



F. 40" WIND CHIME
Amazing Grace.
 \$127.60 ctn. of 6 (\$21.27 ea.)
 HM F67701



G. 40" WIND CHIME
Trust in the Lord.
 \$175.92 ctn. of 6 (\$29.32 ea.)
 HM WC2241



H. 40" WIND CHIME
Love.
 \$175.92 ctn. of 6 (\$29.32 ea.)
 HM WC2244



I. 35" WIND CHIME
Amazing Grace.
 \$164.93 ctn. of 6 (\$27.49 ea.)
 HM WC4534



J. 35" WIND CHIME
Footprints.
 \$164.93 ctn. of 6 (\$27.49 ea.)
 HM WC4532

A. 4' x 5' WOVEN THROWS

Single	Case
\$27.32 ea.	\$146.32 ctn. of 6 (\$24.39 ea.)



HM FTDB3 Single HM DB3 Case



HM FTDB1 Single HM DB1 Case



HM FTDB28 Single HM DB28 Case



HM FTDB22 Single HM DB22 Case



HM FTDB9 Single HM DB9 Case



HM FTDB18 Single HM DB18 Case



HM FTDB16 Single HM DB16 Case



HM FTDB4 Single HM DB4 Case



HM FTDB13 Single HM DB13 Case

B. SHERPA THROWS

Single	Case
\$29.99 ea.	\$162.72 ctn. of 6 (\$27.12 ea.)



HM FTDB202 Single HM DB202 Case



HM FTDB203 Single HM DB203 Case



HM FTDB204 Single HM DB204 Case

FIGURE 1. FIORELLA PRINTER & ACCESSORIES

Specially designed for florists to produce high-quality banners—text and clipart can be printed on a large range of ribbons made of polypropylene, paper, natural silk or coated satin. All prices include delivery.



A. FIORELLA 2.0 PRINTER

No need for PCs, discs, software or cables. User friendly—just plug in and print! Printer is equipped with a high-quality thermal printhead that heats up a thin film of resin providing finely chiseled text that is very resistant to erasure, rain, sun and cold.

Requires Standard North American Power Supply 120V-60Hz (Canada, USA & Mexico).

U.S. \$935.00

HM FWPR2

CANADA \$1,100.00

HM FWPR2CAN



- Complete standalone system — no computer needed
- Includes keyboard
- No programs or printer drivers to install
- Portable, can be used on location
- Prints exact lengths of banners
- Choice of 6 fonts and 6 borders or print without a border
- 58 preprogrammed images
- One-year replacement warranty — requires Tecniflora printing film and ribbon shown below — using other film or ribbon voids warranty
- Programmed in English — additional \$125 charge to program in Spanish

B. STANDARD SATIN RIBBON

Made of ink-coated polypropylene specially developed for the Fiorella printer. Each roll makes approximately 40 banners (depending on size). 75mm x 50m (3" x 55yd.) \$74.00 ctn. of 4 (\$18.50 ea.)

PLAIN

HM 75NBW

White

HM 75NBY

Lemon

HM 75NBLP

Light Pink

HM 75NBP

Pink

HM 75NBMA

Magenta

HM 75NBLV

Lavender

HM 75NBTQ

Turquoise

HM 75NBR

Red

HM 75NBRB

Blue

HM 75NBB

Black

MYLOS

HM 75MMA

White

HM 75MMH

Ivory

HM 75MMJ

Chestnut

HM 75MMP

Peach

HM 75MMF

Burgundy

HM 75MMM

Magenta

HM 75MMG

Lavender

HM 75MME

Violet

HM 75MMB

Olive

HM 75MMC

Pine

HM 75MMI

Blue

HM 75MMK

Black

CLEAR RIGA

HM 75RIWH

White

HM 75RICY

Cyclamen

HM 75RINI

Nile

HM 75RIRO

Rosalba

HM 75RIOR

Orange

HM 75RILV

Lavender

HM 75RIAZ

Azalea

HM 75RIPI

Pine

HM 75RIBL

Blue

HM 75RIRY

Ruby

CLEAR GAVI

HM 75GVWH

White

HM 75GVCY

Cyclamen

HM 75GVNI

Nile

HM 75GVRO

Rosalba

HM 75GVOR

Orange

HM 75GVLV

Lavender

HM 75GVAZ

Azalea

HM 75GVPI

Pine

HM 75GVBL

Blue

HM 75GVRY

Ruby

C. PRINTING FILMS

Non-abrasive resin-based foils. 66yd.

FOR NEWER FWPR2/FWPR2CAN PRINTER

\$93.00 ctn. of 2 (\$46.50 ea.)

HM XKFO

Matte Gold

HM XKFBL

Black

\$173.00 ctn. of 2 (\$86.50 ea.)

HM XKFSG

Super Gold

FOR ORIGINAL FWPR/FWPRCAN PRINTER

\$93.00 ctn. of 2 (\$46.50 ea.)

HM KFO

Matte Gold

HM KFR

Red

\$150.00 ctn. of 2 (\$75.00 ea.)

HM KFS

Silver

HM KFB

Black

\$173.00 ctn. of 2 (\$86.50 ea.)

HM KFSG

Super Gold

ORDERING DETAILS

FTD MARKETPLACE ONLINE

Find everything you need, all in one place, at ftdmarketplace.com. Codified and everyday containers, gourmet treats, plush, essential shop supplies and more are all right at your fingertips. Shop whenever and on whatever device is most convenient for you with our mobile-friendly site.

NEED TO REGISTER FOR ACCESS?

Contact our team at 800.767.4000.

ADDITIONAL ITEMS

We are always looking for new items to delight you and your customers. In addition to this catalog, we regularly introduce new items in monthly catalogs, eNews promotions and on ftdmarketplace.com.

Don't see what you need? Please contact your FTD Marketplace Representative at 800.767.4000.

PRICING

Prices are subject to change. FTD reserves the right to accept or reject orders.

Prices do not include freight. FTD shipping and handling charges are 20% of the value of each carton, with a minimum of \$9.99 per carton for the Continental U.S. and 22% of the value of each carton with a minimum of \$11.99 per carton for Canada.

Canadian members will be billed in Canadian dollars. Canadian prices are calculated by multiplying the U.S. price by the prior month's average exchange rate (as calculated by FTD). The exchange rate is updated on or about the first business day of each month. The rate that is in effect on the day the order was accepted by FTD will be applied to the order.

QUANTITY DISCOUNTS — LTL ITEMS

Purchase 25 or more cases (mix and match) of qualifying product to receive a quantity discount price—just look for item numbers ending in LTL. Please call your Marketplace Representative for a special freight quote on LTL orders.

SHIPPING RESTRICTIONS

Items in this catalog cannot be shipped to Alaska, Hawaii or Puerto Rico.

Some items not available for shipment to Canada. Please contact your FTD Marketplace Representative at 800.767.4000 for details.

RETURNS

In the event you receive product that is not what you ordered or it is damaged when received, you must contact FTD Marketplace Customer Service immediately at 800.767.4000 (option #2) to put in a claim for credit. All such claim requests must be made within 24 hours of shipment receipt. Gourmet items cannot be returned.

FTD reserves the right to revise publishing or pricing errors in its catalogs or any of its websites without notice, including errors that may result from a change in law, regulation, judgment issued, implemented or enacted after the publishing date that causes FTD to incur new or modified fees and costs. FTD further reserves the right to cancel any and all orders resulting from such pricing errors, even if Customer has received an order confirmation from FTD.

FTD® and the Mercury Man logo are registered trademarks of FTD, LLC

STAY CONNECTED

 @MercuryNetwork  @FTDMercuryNetwork  blog.ftdi.com

800.767.4000 | FAX 630.719.4861 | MERCURY 90-0233AA