

SYMPATHY 2020 FTD® MARKETPLACE™

Sympathy Collection





A. GLASS GATHERING VASE
4¾" dia. opening × 8"H.
\$43.88 ctn. of 9 (\$4.88 ea.)
KV 4110-09-09 S5256, S5262,
S5270, S5285, S5289, S5294,
S5314, S5319, S5324, S5325,
S5336, S9-4979 and S40-4529



B. GLASS GATHERING VASE
3¾" dia. opening × 6½"H.
\$40.88 ctn. of 12 (\$3.41 ea.)
KV 4102-12-09 S40-4529



C. GLASS GATHERING VASE
4" dia. opening × 8"H.
\$42.88 ctn. of 12 (\$3.57 ea.)
KV 4104-12-09 S46-4550



D. GLASS GATHERING VASE
6" dia. opening × 8"H.
\$44.99 ctn. of 6 (\$7.50 ea.)
KV 4111-06-09 S20-4482



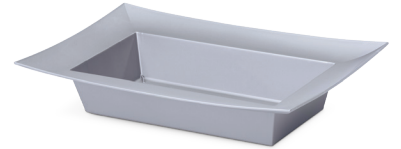
E. GLASS ROSE VASE
4½" dia. opening × 8"H.
\$32.88 ctn. of 12 (\$2.74 ea.)
KV 4099-12-09 S5303



F. COBALT GLASS GATHERING VASE
4¾" dia. opening × 8"H.
\$33.88 ctn. of 6 (\$5.65 ea.)
KV COB940 S5307 and S5345



G. HANDBLOWN GLASS CYLINDER
6" dia. opening × 6"H.
\$35.34 ctn. of 6 (\$5.89 ea.)
KV FTG66 S5290 and S6-4986



H. ESSENTIALS™ SILVER PLASTIC RECTANGULAR BOWL
 9½" × 4¼" × 1½⅝" reservoir.
 Fits one floral foam brick.
 \$75.40 ctn. of 24 (\$3.14 ea.)
 KV 45-82406 S31-5009



I. ABBY PLASTIC COMPOTE VASE
 8½" dia. opening × 5¼"H.
 \$31.99 ctn. of 6 (\$5.33 ea.)
 KV 138-06-22 S5261, S5273
 and S5317



J. PLASTIC DESIGNER URN
 8" dia. opening × 9½"H.
 \$37.48 ctn. of 6 (\$6.25 ea.)
 KV 81-06-22 S2-4438, S15-4470,
 S28-5010 and S45-4544



K. VERSATILE PLASTIC CONTAINER
 9" dia. opening × 9"H.
 \$26.88 ctn. of 12 (\$2.24 ea.)
 KV 170-12-22 S5253, S5266,
 S5276, S5281, S5291, S5301, S5313
 and S5332



L. PLASTIC PEDESTAL URN
 8½" dia. opening × 11¼"H.
 \$70.88 ctn. of 12 (\$5.91 ea.)
 KV 84-12-22 S5268, S5282,
 S5300, S5328, S5331, S5344
 and S5349



S5255



S5293



S5339



A. WOODCHIP BASKETS

Hard liners included.
Moveable handle.
8½", 10" and 11¼" oval.
\$67.99 ctn. of 12 (\$5.67 ea.)
KV 2097 S5255, S5258, S5260,
S5272, S5284, S5286, S5293,
S5318, S5321, S5334, S5335,
S5337, S5338, S5339, S5340,
S5343, S5346 and S5350



B. WOODCHIP BASKETS WITH GREEN RIMS

Hard liners included.
12" and 14" rectangular.
\$59.88 ctn. of 8 (\$7.49 ea.)
KV F6717GW S36-4524



C. WOODCHIP BASKET
Hard liners included.
Moveable handle.
6½" dia. opening x 4"H.
\$40.99 ctn. of 12 (\$3.42 ea.)
KV BWC6 S9-4980



D. WOODCHIP BASKET
Hard liners included.
Moveable handle.
8½" dia. opening x 4½"H.
\$39.88 ctn. of 8 (\$4.99 ea.)
KV BWC8 S9-4980



E. WOODCHIP BASKETS
PVC liners include.
Moveable handle.
8", 10" and 12" rectangle.
\$17.88 ctn. of 3 (\$5.96 ea.)
KV 9710432 S25-4493



F. 4" WATER TUBE
Polystyrene tube with cap.
\$43.88 ctn. of 500 (\$0.09 ea.)
KV 1931SO S25-4493



G. WHITEWASH WOODCHIP POTCOVER
Over-the-rim hard liners included.
6¾" dia. opening x 6"H.
Fits a 6" grower's pot.
\$49.88 ctn. of 12 (\$4.16 ea.)
KV 72346WW S5259 and S5287



H. WHITEWASH BAMBOO BASKETS
Over the-rim hard liners included.
7" oval, 7" square, 6½" round.
\$40.88 ctn. of 24 (\$1.70 ea.)
KV 1603GW S7-4450
and S29-4503



I. WHITEWASH WOODCHIP BASKETS
Hard liners included. Moveable handle.
7", 8½" and 10" average sizes.
\$68.88 ctn. of 12 (\$5.74 ea.)
KV 85616WW S5305, S29-5008
and S43-5027



J. 15" WREATH BASE
 15" dia. x 3"W x 2 3/4"H.
 9" inside diameter.
 \$74.88 ctn. of 6 (\$12.48 ea.)
 KV 11-01030 S29-4502



K. 18" WREATH
 \$75.88 ctn. of 4 (\$18.97 ea.)
 KV 1840SO S5252, S5265, S5280,
 S5292, S5309, S5311, S5333, S5347,
 S5348 and S44-4542



L. 18" OPEN HEART
 \$68.88 ctn. of 4 (\$17.22 ea.)
 KV 1825SO S46-4547



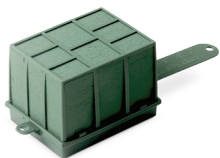
M. 18" SOLID HEART
 \$70.88 ctn. of 4 (\$17.72 ea.)
 KV 1815SO S5267, S5274, S5320
 and S45-4543



N. 20" CROSS
 \$44.99 ctn. of 4 (\$11.25 ea.)
 KV 1830SO S44-5024
 and S47-4556



O. 24" CROSS
 \$58.88 ctn. of 4 (\$14.72 ea.)
 KV 1835SO S5283, S5-4446
 and S12-4464



P. FLORACAGE® HOLDER
 4 1/4"W x 3"D x 3 1/4"H.
 \$29.88 ctn. of 12 (\$2.49 ea.)
 KV 11-01000 S5311

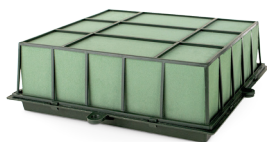


Q. FLORACAGE® HOLDER
 6 3/4"W x 4 1/4"D x 3 1/4"H.
 \$51.88 ctn. of 12 (\$4.32 ea.)
 KV 11-01010 S6-4447
 and S31-5006

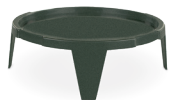


R. OASIS® JUMBO CAGE
 13 7/8"W x 6 1/16"D x 3 3/8"H.
 \$24.88 ctn. of 4 (\$6.22 ea.)
 KV 11-01015 S5254, S5269,
 S5296, S5302, S5304, S5308,
 S5322, S5329 and S13-4997

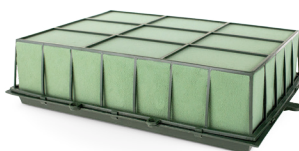
S. 48" METAL EASEL
 Made in the USA.
 \$39.88 ctn. of 10 (\$3.99 ea.)
 KV 565-10-07 S5254, S5267, S5269,
 S5274, S5283, S5292, S5296, S5302,
 S5304, S5308, S5309, S5311, S5320,
 S5322, S5333, S5347, S5348, S6-4447,
 S12-4464, S29-4502, S44-4542,
 S44-5024, S45-4543, S46-4547
 and S47-4556



A. SERENITY CAGE WITH TWO AQUAFOAM® BRICKS
10 $\frac{1}{2}$ "W x 10 $\frac{1}{4}$ "D x 3 $\frac{1}{4}$ "H.
\$36.99 ctn. of 6 (\$6.17 ea.)
KV 665-06-07 S5298



B. ROUND SERENITY RISER
6 $\frac{3}{4}$ " dia. x 2"H. 5 $\frac{1}{2}$ " dia. opening.
\$25.88 ctn. of 24 (\$1.08 ea.)
KV 661-24-07 S5298



C. SERENITY CAGE WITH THREE AQUAFOAM® BRICKS
15 $\frac{1}{4}$ "W x 10 $\frac{1}{4}$ "D x 3 $\frac{1}{4}$ "H.
\$31.88 ctn. of 4 (\$7.97 ea.)
KV 667-04-07 S5310, S5316 and S5323



D. RECTANGULAR SERENITY RISER
6 $\frac{1}{2}$ "W x 3 $\frac{3}{4}$ "D x 2"H. 6"W x 3"D bench.
\$25.88 ctn. of 24 (\$1.08 ea.)
KV 662-24-07 S5310, S5316 and S5323



E. RING HOLDER
12" dia. x 1 $\frac{1}{2}$ "W x 1 $\frac{3}{4}$ "H.
8 $\frac{1}{2}$ " inside diameter.
\$66.99 ctn. of 10 (\$6.70 ea.)
KV 11-01043 S46-4548



F. DESIGN RING
13" dia. x 1 $\frac{3}{4}$ "W x 2 $\frac{1}{4}$ "H foam.
8 $\frac{1}{2}$ " inside tray diameter.
\$110.44 ctn. of 10 (\$11.04 ea.)
KV 11-11048 S5297



G. DESIGN RING
14 $\frac{1}{2}$ " dia. x 2 $\frac{1}{4}$ "W x 2 $\frac{1}{8}$ "H foam.
9" inside tray diameter.
\$77.88 ctn. of 6 (\$12.98 ea.)
KV 11-11049 S5257, S5263, S5271,
S5278, S5288, S5295, S5306, S5315,
S5327 and S5330



H. 18" RAQUETTES HOLDER
18"W x 4"D x 3"H.
\$66.00 ctn. of 10 (\$6.60 ea.)
KV 11-01110 S44-4541



I. SINGLE CASSET SADDLE
13 $\frac{1}{2}$ "W x 10 $\frac{1}{2}$ "D x 2 $\frac{1}{2}$ "H.
Holds one floral foam brick.
\$63.52 ctn. of 18 (\$3.53 ea.)
KV 625-18-07 S12-4465, S13-4994,
S46-4549 and S47-4555

J. DOUBLE CASSET SADDLE
23"W x 10"D x 2 $\frac{1}{2}$ "H.
Holds two floral foam bricks.
\$66.43 ctn. of 12 (\$5.54 ea.)
KV 626-12-07 S5251, S5264,
S5275, S5279, S12-4465, S16-4471
and S20-4481



K. DOUBLE CASSET SADDLE
20 $\frac{3}{4}$ "W x 8"D x 4 $\frac{3}{4}$ "H.
Holds two floral foam bricks.
\$43.99 ctn. of 6 (\$7.33 ea.)
KV 620-06-04 S5312 and S5326



Sympathy Codified



**PEACE AND HOPE™
LAVENDER BOUQUET SB4**
5" sq. x 8"h; 4¼" sq. opening.
\$87.48 ctn. of 12 (\$7.29 ea.)
2PLUS \$78.72 ctn. of 12 (\$6.56 ea.)
KV 2053



**REMEMBRANCE®
BOUQUET SB6**
6½" dia. x 8"h.
\$77.88 ctn. of 12 (\$6.49 ea.)
2PLUS \$70.08 ctn. of 12 (\$5.84 ea.)
KV 2054



**COMFORT AND GRACE™
BOUQUET SB7**
6½" dia. x 7"h; 5½" dia. opening.
\$77.88 ctn. of 12 (\$6.49 ea.)
2PLUS \$70.08 ctn. of 12 (\$5.84 ea.)
KV 2055



**FAITHFUL BLESSINGS™
BOUQUET FBB**
3½" sq. x 8"h.
\$83.88 ctn. of 12 (\$6.99 ea.)
2PLUS \$75.48 ctn. of 12 (\$6.29 ea.)
KV 1460



COMFORT PLANTER CPP
7" dia. x 6"h. Holds a 6" plant.
\$95.88 ctn. of 12 (\$7.99 ea.)
2PLUS \$86.28 ctn. of 12 (\$7.19 ea.)
KV 0685



COMFORT PLANTER CP2
10" dia. x 10½"h. Holds an 8" plant.
\$95.96 ctn. of 4 (\$23.99 ea.)
2PLUS \$86.36 ctn. of 4 (\$21.59 ea.)
KV 1695



SYMPATHY COMBO PACK #1
6 each of FBB and CPP.
\$95.99 ctn. of 12
KV 2073



SYMPATHY COMBO PACK #2
6 each of SB4, SB6 and SB7.
\$130.99 ctn. of 18
KV 2060

CODIFIED VASES MAY NOT BE SUBSTITUTED. CODIFIED ORDERS ARE EXEMPT FROM SHOP ORDER MINIMUMS AND MUST BE FILLED USING FTD SUGGESTED RETAIL PRICING.



FIORELLA PRINTER & ACCESSORIES

Specially designed for florists to produce high-quality banners — text and clipart can be printed on a large range of ribbons made of polypropylene, paper, natural silk or coated satin. All prices now include delivery.



A. FIORELLA 2.0 PRINTER

No need for PCs, discs, software or cables. User friendly—just plug in and print! This printer is equipped with a high-quality thermal printhead that heats up a thin film of resin. This process provides finely chiseled texts that are very resistant to erasure, rain, sun and cold.

Requires Standard North American Power Supply 120V-60Hz (Canada, USA & Mexico).

One-year replacement warranty. Requires printing film and ribbon shown below. Using other film or ribbon voids warranty.

U.S. \$935.00
KV FWPR2
CANADA \$1,100.00
KV FWPR2CAN



B. STANDARD SATIN RIBBON

Made of ink-coated polypropylene specially developed for the Fiorella printer. Each roll makes approximately 40 banners (depending on size). 75mm x 50m (3" x 55yd.) \$72.00 ctn. of 4 (\$18.00 ea.)

PLAIN

- KV 75NBW White
- KV 75NBY Lemon
- KV 75NBLP Light Pink
- KV 75NBP Pink
- KV 75NBMA Magenta
- KV 75NBLV Lavender
- KV 75NBTDQ Turquoise
- KV 75NBR Red
- KV 75NBRB Blue
- KV 75NBB Black

MYLOS

- KV 75MMA White
- KV 75MMH Ivory
- KV 75MMJ Chestnut
- KV 75MMP Peach
- KV 75MMF Burgundy
- KV 75MMG Magenta
- KV 75MMG Lavender
- KV 75MME Violet
- KV 75MMB Olive
- KV 75MMC Pine
- KV 75MMI Blue
- KV 75MMK Black

CLEAR RIGA

- KV 75RIWH White
- KV 75RINY Cyclamen
- KV 75RINI Nile
- KV 75RIRO Rosalba
- KV 75RIOR Orange
- KV 75RILV Lavender
- KV 75RIAZ Azalea
- KV 75RIPI Pine
- KV 75RIBL Blue
- KV 75RIRY Ruby

CLEAR GAVI

- KV 75GVWH White
- KV 75GVCY Cyclamen
- KV 75GVNI Nile
- KV 75GVRO Rosalba
- KV 75GVOR Orange
- KV 75GVLV Lavender
- KV 75GVAZ Azalea
- KV 75GVPI Pine
- KV 75GVBL Blue
- KV 75GVRY Ruby

C. PRINTING FILMS

Non-abrasive resin-based foils. 66yd.

FOR NEWER FWPR2/FWPR2CAN PRINTER
\$93.00 ctn. of 2 (\$46.50 ea.)

- KV XKFO Matte Gold
- KV XKFB Black
- KV XKFSG Super Gold

FOR ORIGINAL FWPR/FWPRCAN PRINTER
\$93.00 ctn. of 2 (\$46.50 ea.)

- KV KFO Matte Gold
- KV KFR Red

FOR ORIGINAL FWPR/FWPRCAN PRINTER
\$150.00 ctn. of 2 (\$75.00 ea.)

- KV KFB Black
- KV KFS Silver
- KV KFSG Super Gold

FIORELLA PRINTER & ACCESSORIES PRICES INCLUDE SHIPPING. \$100 MINIMUM ORDER.

FTDMARKETPLACE.COM
SHOPPING SITE!

stay connected!
f @MercuryNetwork | @MercuryNetwork | @FTDMercuryNetwork | blog.ftdi.com

To view all of our monthly specials, visit www.ftdi.com/promotions

800.767.4000 | FAX 630.719.4861 | MERCURY 90-0233AA

While supplies last. Available for members in Continental U.S. and Canada only. Items not available to ship to Alaska, Hawaii and Puerto Rico. Offer not valid on existing or previously placed orders and cannot be combined with any other offers or discounts. Discounts on items are for immediate shipping only, not on future orders. FTD may update these terms or cease any offer at any time. Any dispute regarding offers or orders will be governed by the terms of your FTD member agreement and the terms found at www.ftdi.com. Prices are subject to change. FTD reserves the right to accept or reject orders. Descriptive or typographical errors are subject to correction. Canadian members will be billed in Canadian dollars. Canadian prices are calculated by multiplying the U.S. price by the prior month's average exchange rate (as calculated by FTD). The exchange rate is updated on or about the first business day of each month; it will apply on the date the order is accepted by FTD. Prices do not include freight. FTD shipping and handling charges are 20% of the value of each carton with a minimum of \$9.99 per carton for the Continental U.S. and 22% of the value of each carton with a minimum of \$11.99 per carton for Canada. *A Registered Trademark of FTD, LLC. **A Trademark of FTD, LLC. ©2020 FTD, LLC. Printed in the USA.

